

**Texfinity
online support**

All Texfinity machines have online support, which allows easy maintenance and avoids sending expensive technicians all over the world. Our machines are developed as such for maximum support from one central location.

Texfinity warranty

All our machines receive upto 3 years full warranty. Find out more in detail with the responsible sales person for your region.



Texfinity identity

All our machinery will receive a name unique to Texfinity, visualised with a T, and protected with a registered name. With a wide range of equipment, Texfinity is one of the few producers in the world of fully owned & developed ironing lines.

Technical specs

Stations	Lanes	Working width	Speed
3	1	3300 / 3500 mm	10-60 m/min
4	1	3300 / 3500 mm	10-60 m/min
4	1-2	3500 mm	10-60 m/min

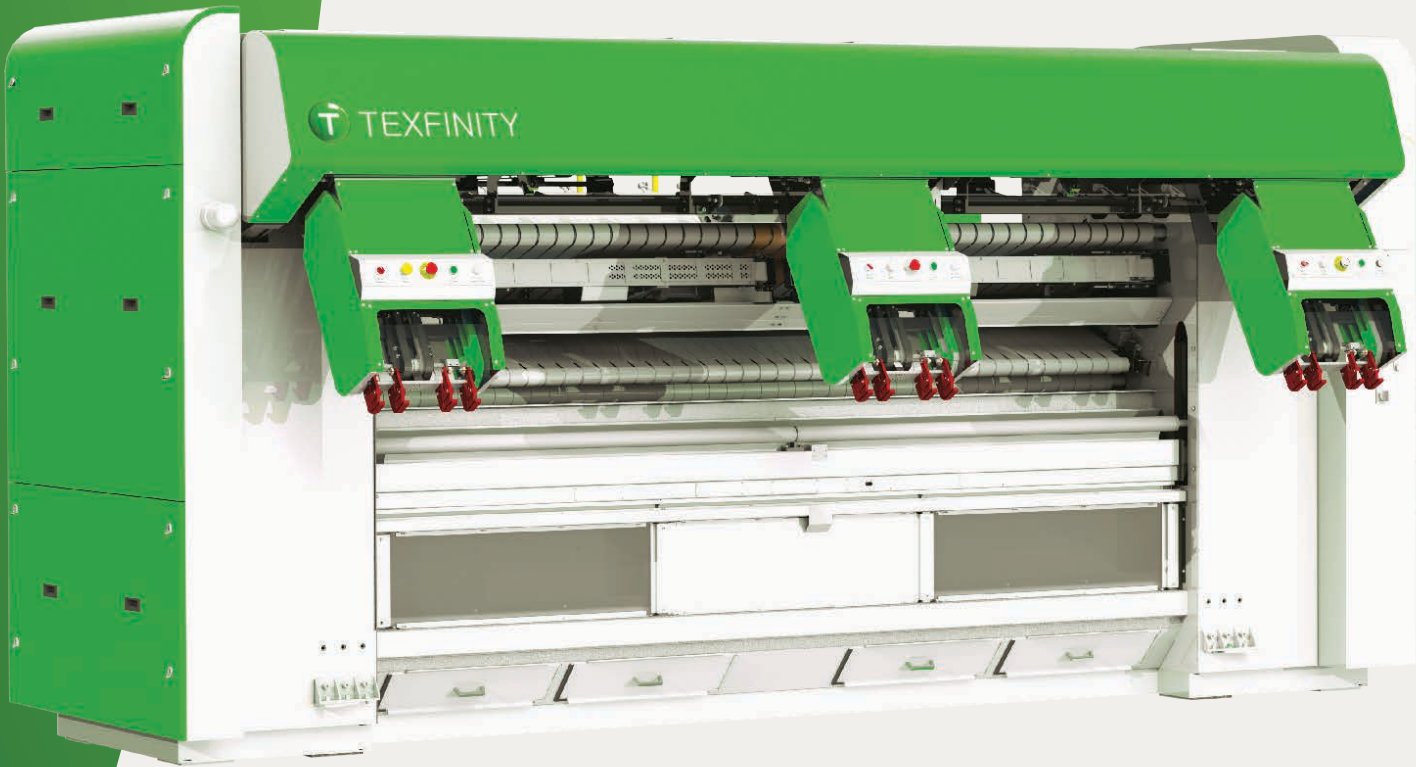
Air pressure	0.6 Mpa
Air consumption	500 l/min.
Power supply	3 x 380 V.

Dimensions and weight

Model	Width	Lenght	Height	Weight
T.feed 3	4590 mm	1900 mm	2395 mm	4700 kg
T.feed 4 - 3300	4960 mm	2220 mm	2380 mm	4200 kg
T.feed 4 - 3500	5210 mm	2220 mm	2380 mm	4700 kg



Texfinity NV
 Hoge Mauw 118
 2370 Arendonk
www.texfinity.com
 mail: info@texfinity.com



High speed flexible feeder

Tfeed[®] 3/4

High speed and high quality flexible feeder for large and small pieces.

3 or 4 Feeding Stations

1 Lane or 1 & 2 Lane



Texfinity builds strong and performant laundry machines. We use state of the art components and fast and reliable controllers to assure a long life and ease of operation.

The Texfinity T.feed 3 or 4 is the best solution for high quality and high speed feeding of both sheets and small pieces. It is available with 3 or 4 feeding stations, and in a 1-lane or combined 1 & 2-lane configuration.

The T.feed 3 is a 1-lane feeder and has 3 Feeding Stations, the T.feed 4 is equipped with 4 Feeding Stations, and has the option of feeding automatically on both 1 & 2 lanes.

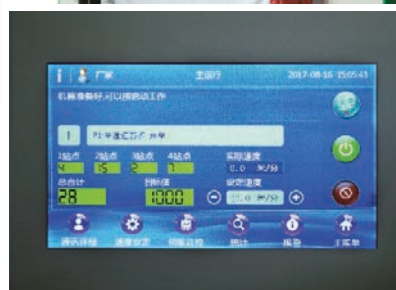
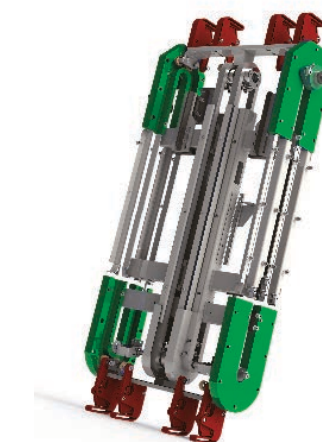
The machine exists in 3.300mm and 3.500mm working width.

Since the pieces are lifted from the feeding to the spreading and transfer positions, no pit in the floor is needed when feeding linen up to 1900 mm.

Control system

The T.feed uses a PLC based control system. Operating the machine is done through an easy to use 10" color touch screen. The state of the art PLC assures high precision calculations and control to assure a high feeding quality. The color touch screen makes it easy to create and change different feeding programs.

The PLC communicates to the ironer and the folder to pass on article, customer and speed information, as well as it stores statistical information.



Technical components

In order to improve the feeding efficiency, each feeding station has a rotation system existing of 2 sets of feeding clamps. As soon as one item has been fed into the first set of clamps, this set will move up and the second set of clamps comes down and is ready for the next item to be inserted. This ensures, that there is always an item ready to be transferred to the feeder, as it generates a buffer of 3 or 4 articles, depending on the type of feeder.

The feeding station will hand over the item to the main feeding clamps (3 or 4, depending on the configuration) which are controlled by a high precision and high speed servo motor. This makes both high and low speed spreading possible, depending on the type of article.

The spreading clamps will feed the item onto the vacuum transfer bar, where the item is immediately fixed, before moving forwards and feeding it onto the vacuum feeding belts, assuring a high quality input. The double spreading belts will ensure perfect side edge treatment, both on 1 and/or 2 lanes.

For manual feeding, the feeding station section will turn upwards and the vacuum box will move forward, so the operator can feed directly onto the vacuum table.

Service screens are available for easy fault finding and testing of functions.

The control can be connected easily to the Internet for remote online support and eventual upgrades.

TEXFINITY[®]
INDUSTRIAL LAUNDRY APPLIANCES